

PART OF N.E. 1/4 & S.E. 1/4 OF SEC. 15, T.5 N., R.1 W., S.L.B. & M.
SHADOW VALLEY ESTATES NO. 4

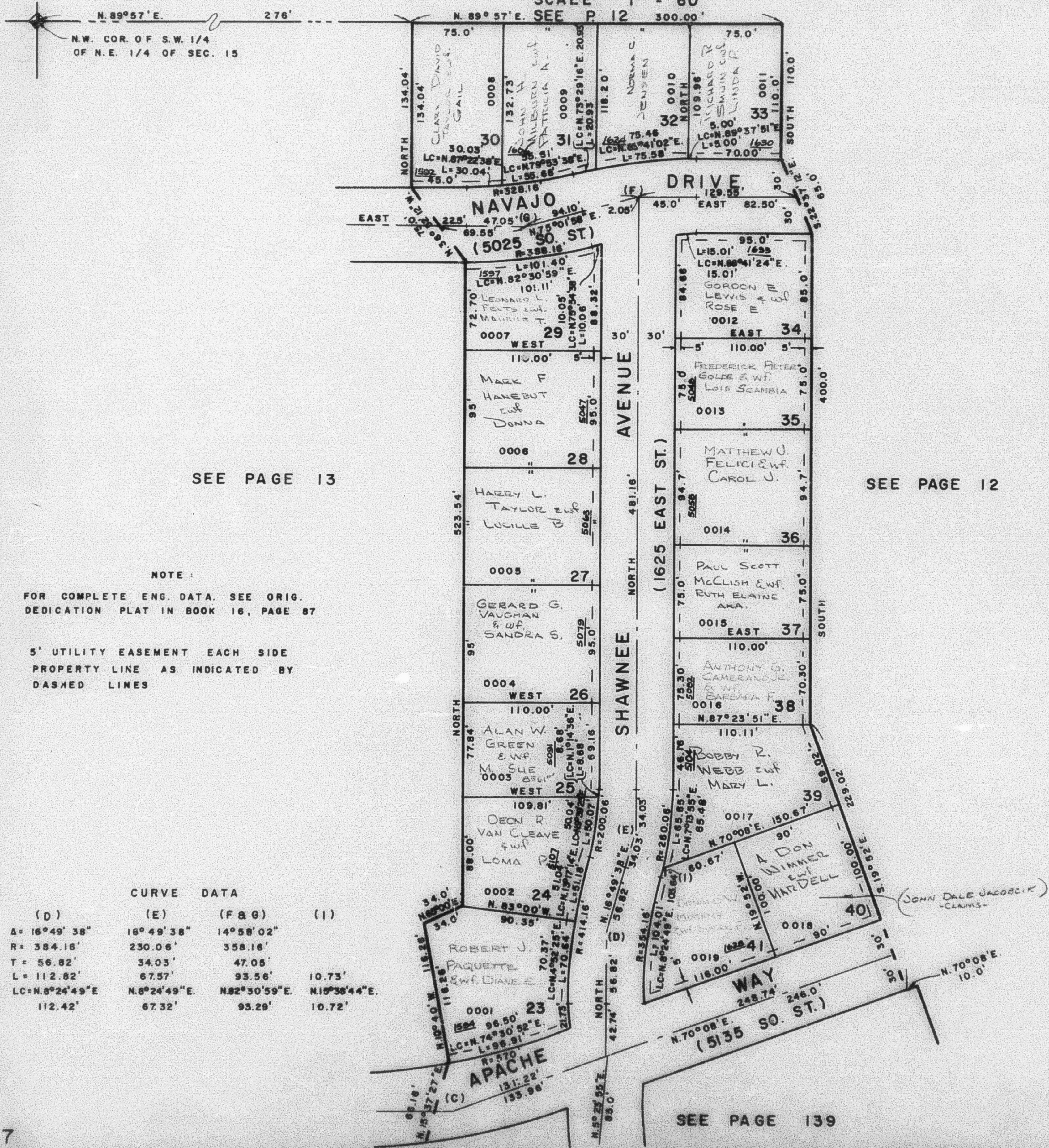
140

TAXING UNIT: 25

LOTS 23-41
 IN OGDEN CITY

PREFIX: 07-140

SCALE 1" = 60'



SEE PAGE 13

SEE PAGE 12

NOTE:

FOR COMPLETE ENG. DATA, SEE ORIG.
 DEDICATION PLAT IN BOOK 16, PAGE 87

5' UTILITY EASEMENT EACH SIDE
 PROPERTY LINE AS INDICATED BY
 DASHED LINES

CURVE DATA

(D)	(E)	(F&G)	(I)
A = 16°49'38"	16°49'38"	14°58'02"	
R = 384.16'	230.06'	358.16'	
T = 56.82'	34.03'	47.08'	
L = 112.82'	67.57'	93.56'	10.73'
LC = N.8°24'49"E	N.8°24'49"E	N.82°30'59"E	N.15°38'44"E
112.42'	67.32'	93.29'	10.72'

(JOHN DALE JACOBICK
 -CLAIMS-)

SEE PAGE 139